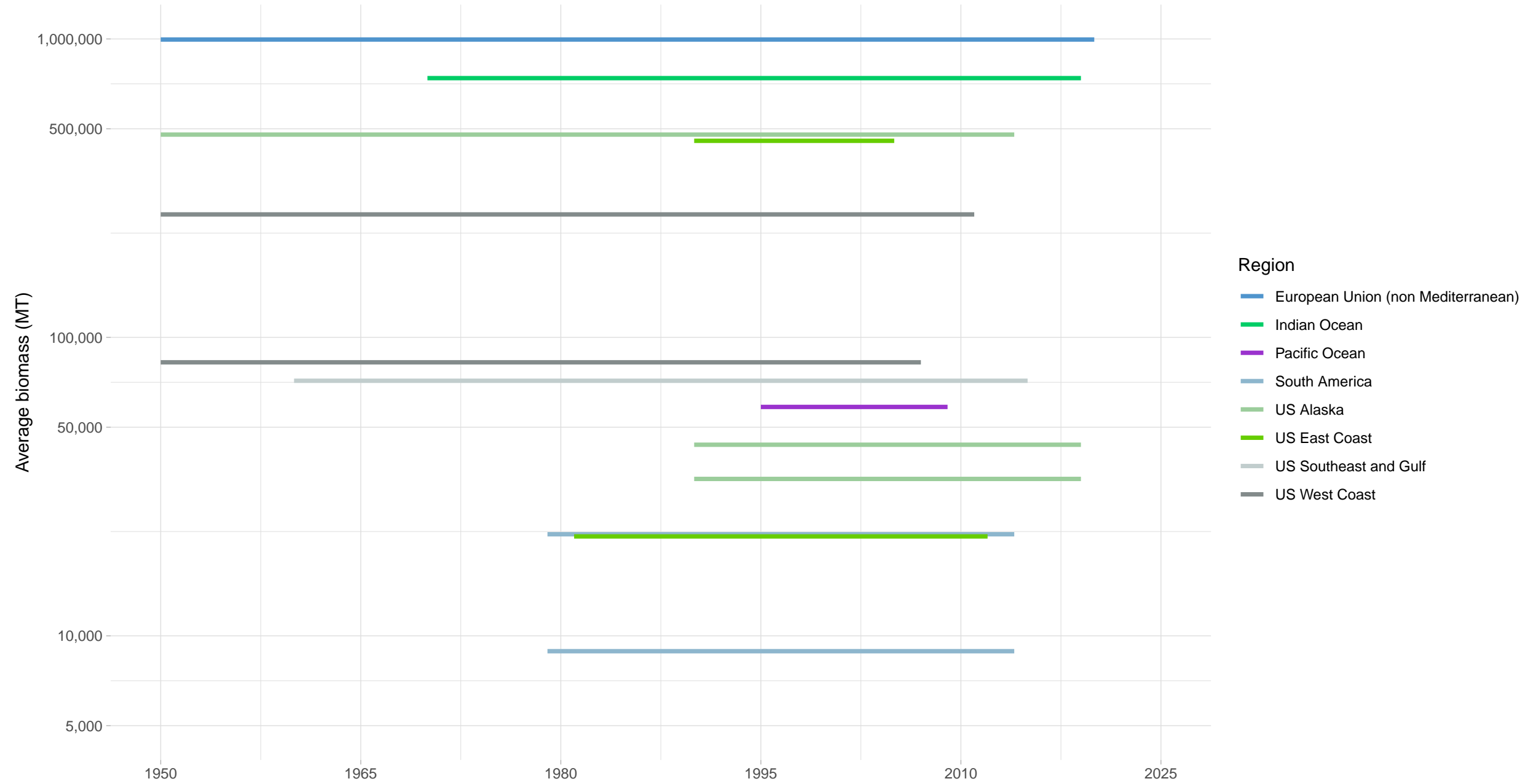
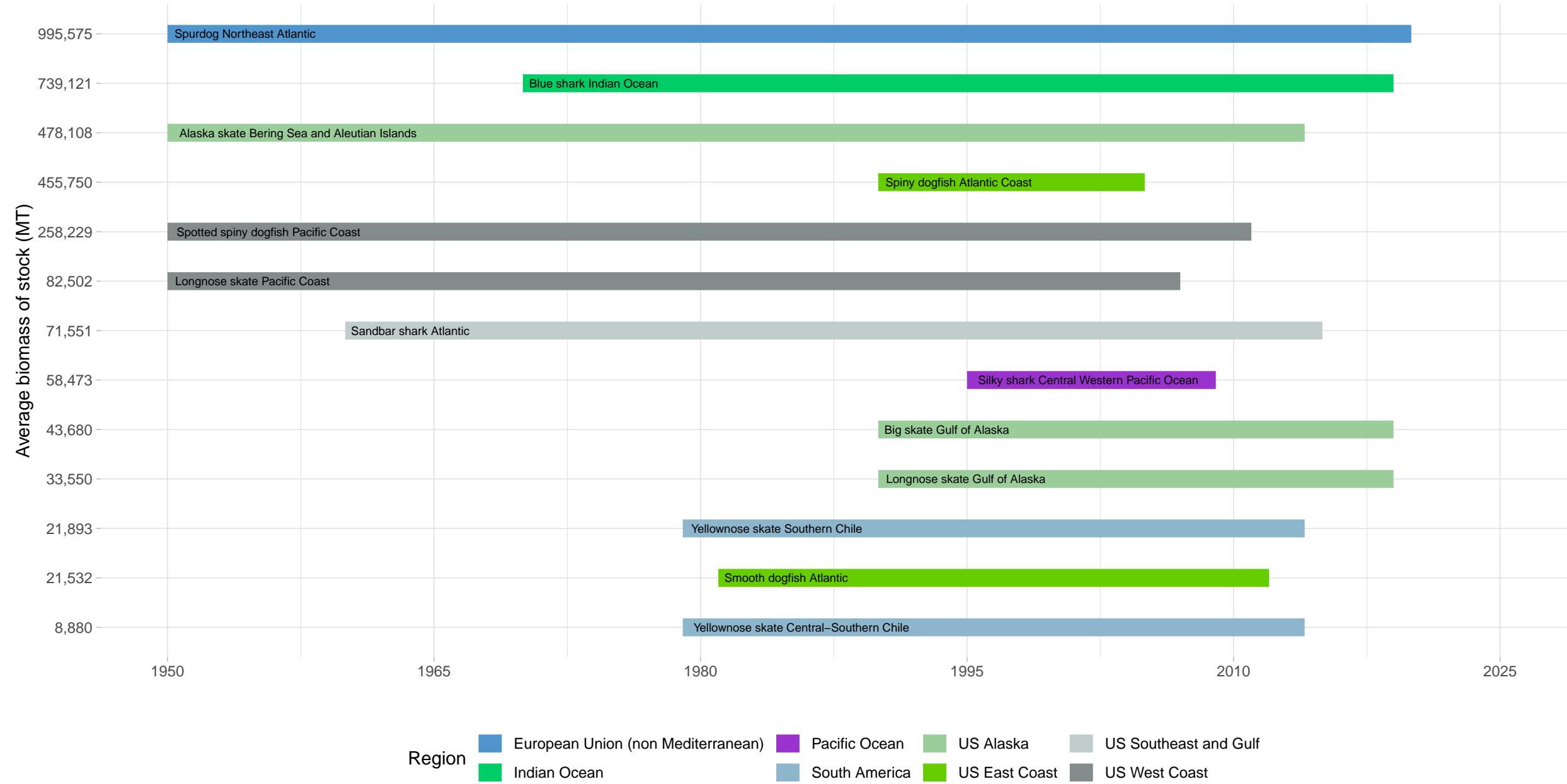


Biomass Coverage in Elasmobranchs Taxonomy Group



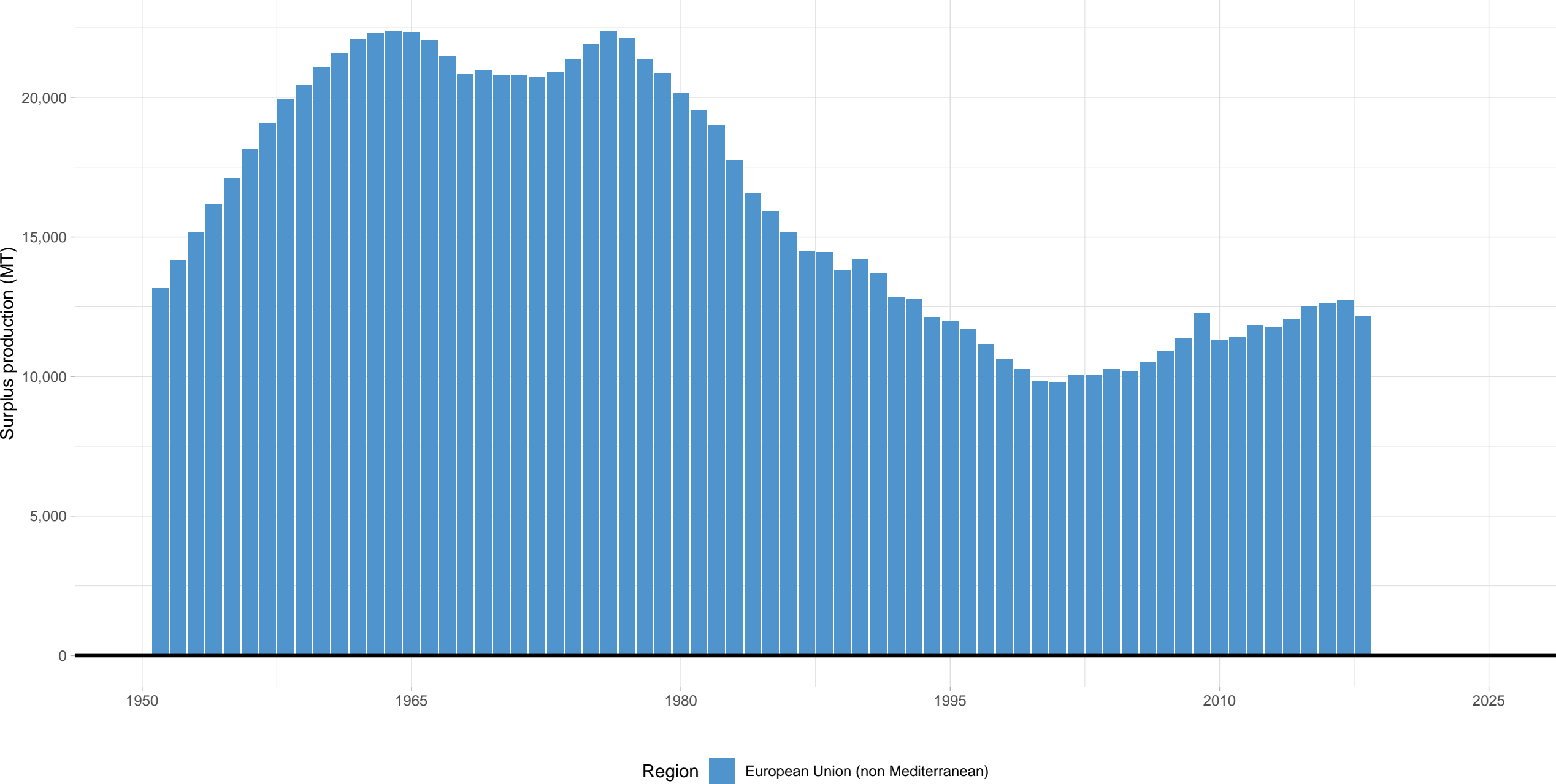
Biomass Coverage Over Time in Elasmobranchs Taxonomy Group

Stocks ordered from lowest to highest average biomass



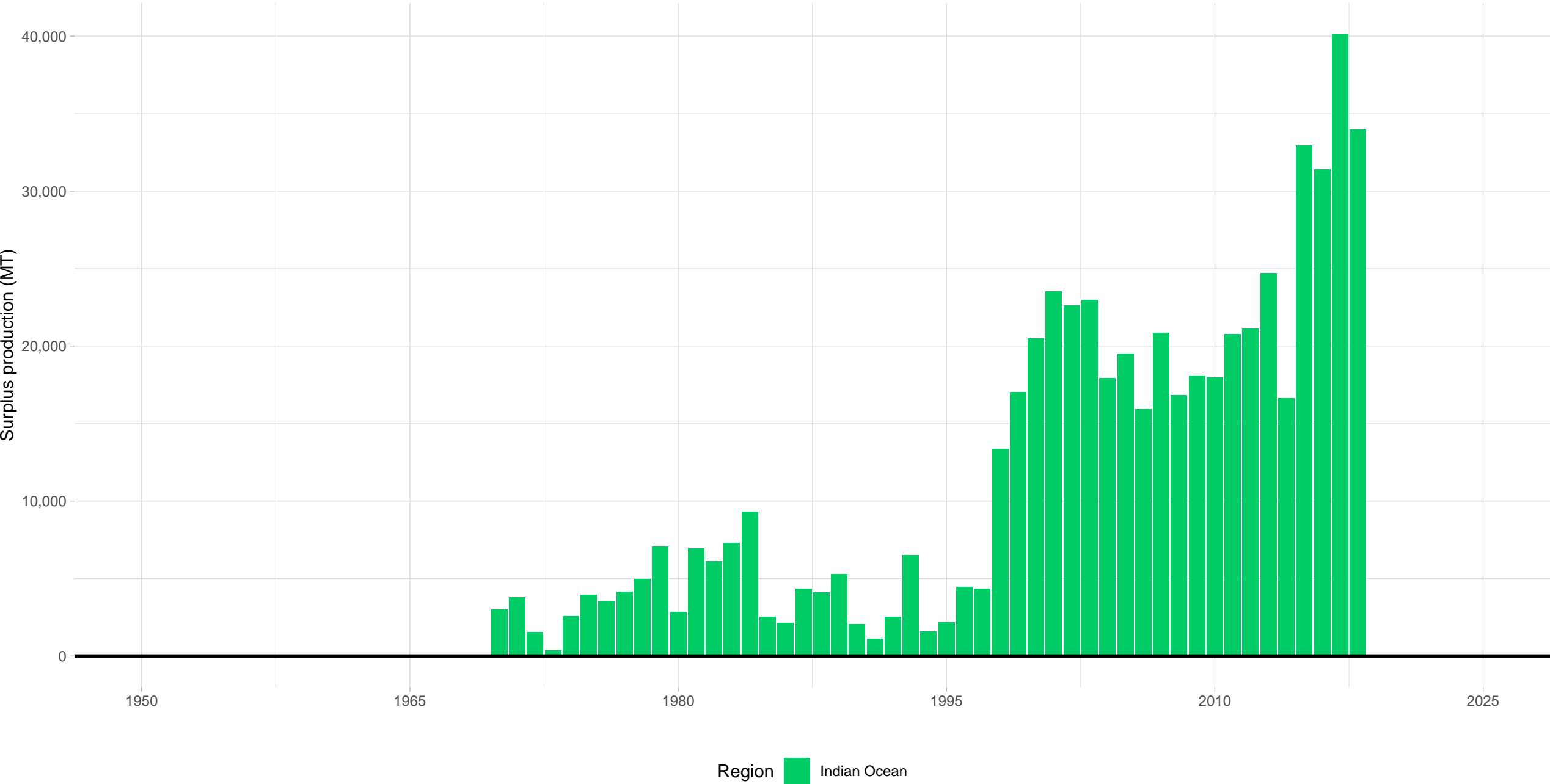
Spurdog Northeast Atlantic – Elasmobranchs Taxonomy Group

Stock represents 13% of average absolute surplus production



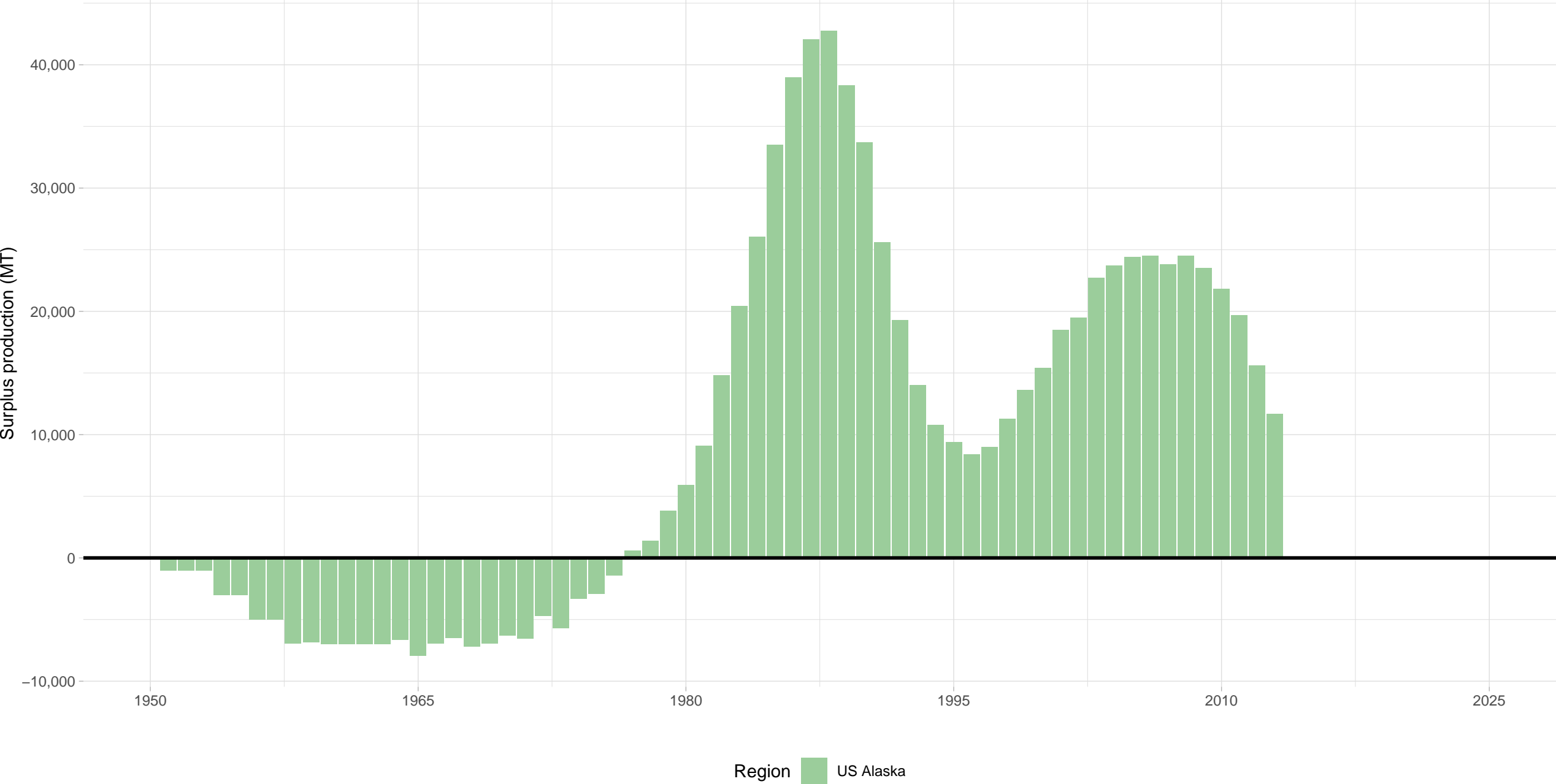
Blue shark Indian Ocean – Elasmobranchs Taxonomy Group

Stock represents 13% of average absolute surplus production



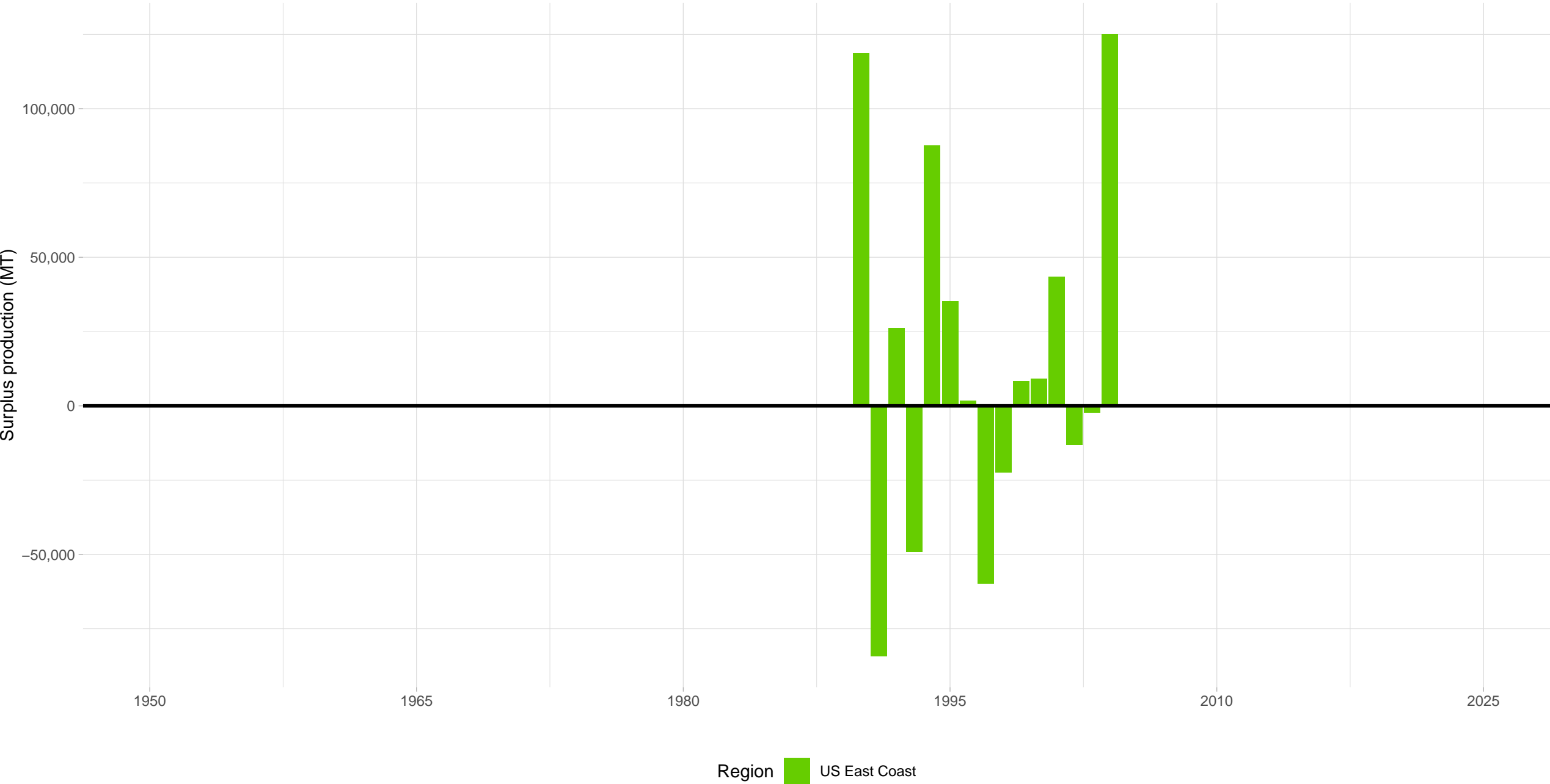
Alaska skate Bering Sea and Aleutian Islands – Elasmobranchs Taxonomy Group

Stock represents 15% of average absolute surplus production

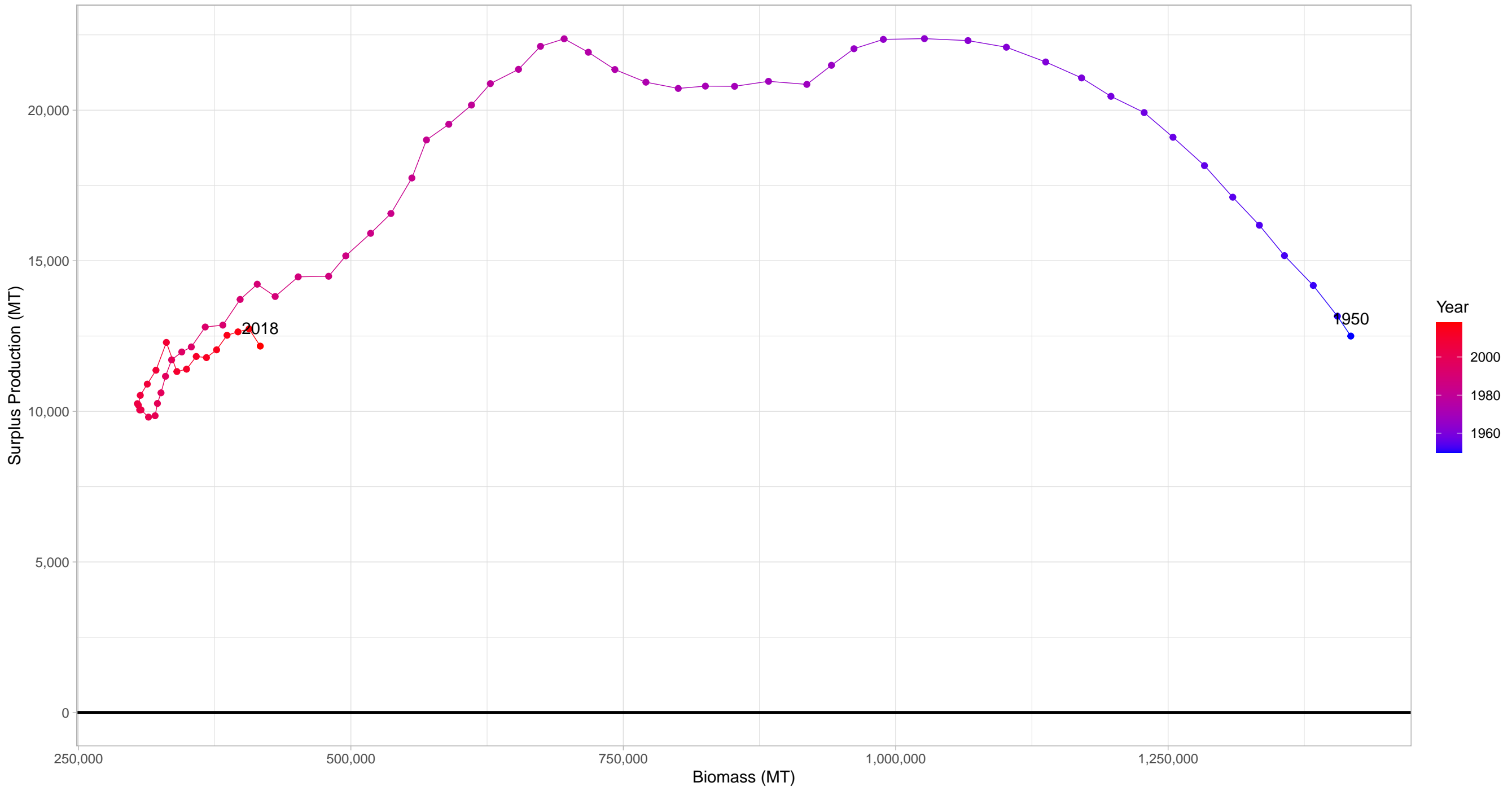


Spiny dogfish Atlantic Coast – Elasmobranchs Taxonomy Group

Stock represents 51% of average absolute surplus production

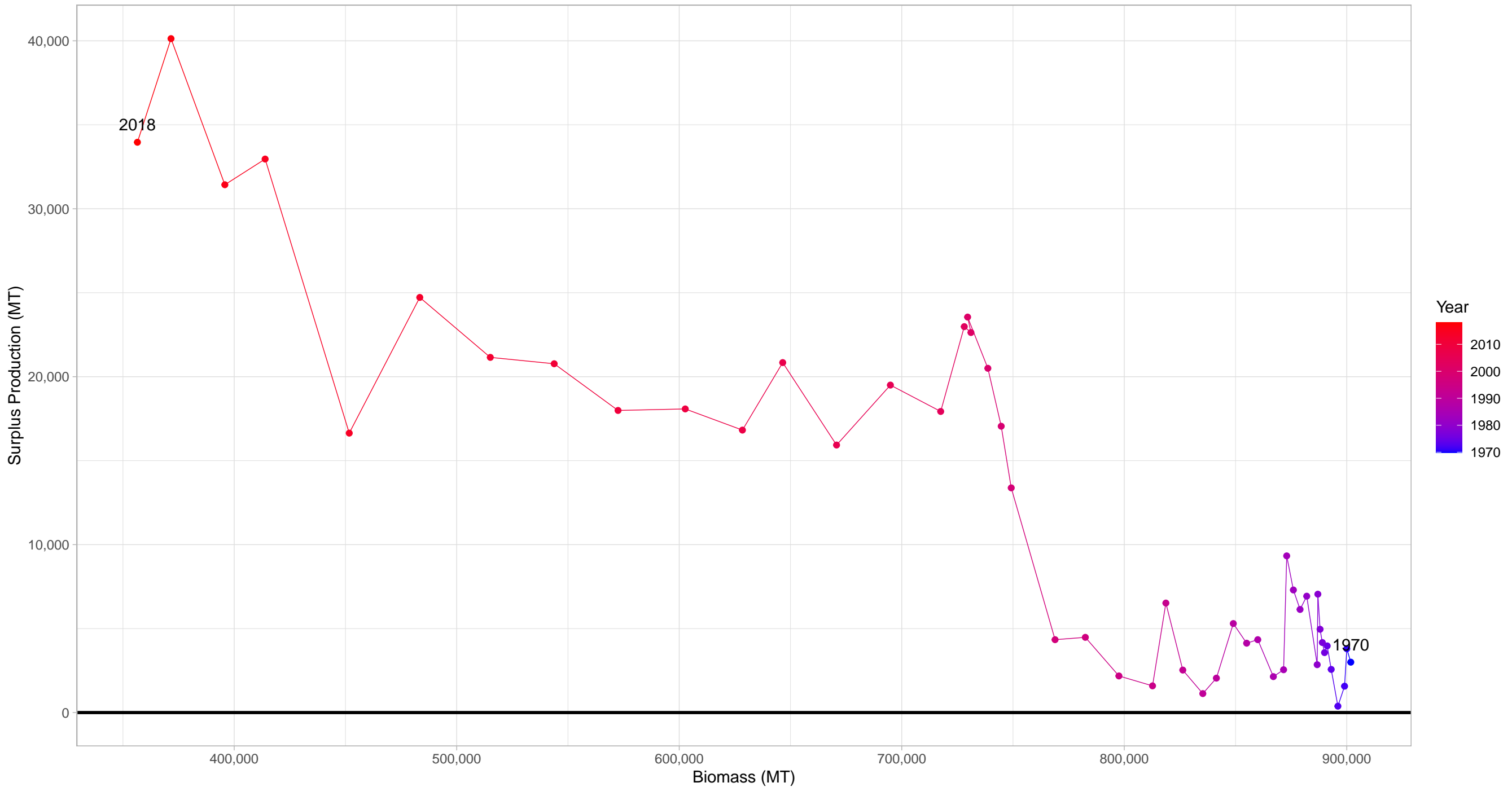


Spurdog Northeast Atlantic in Elasmobranchs Taxonomy Group



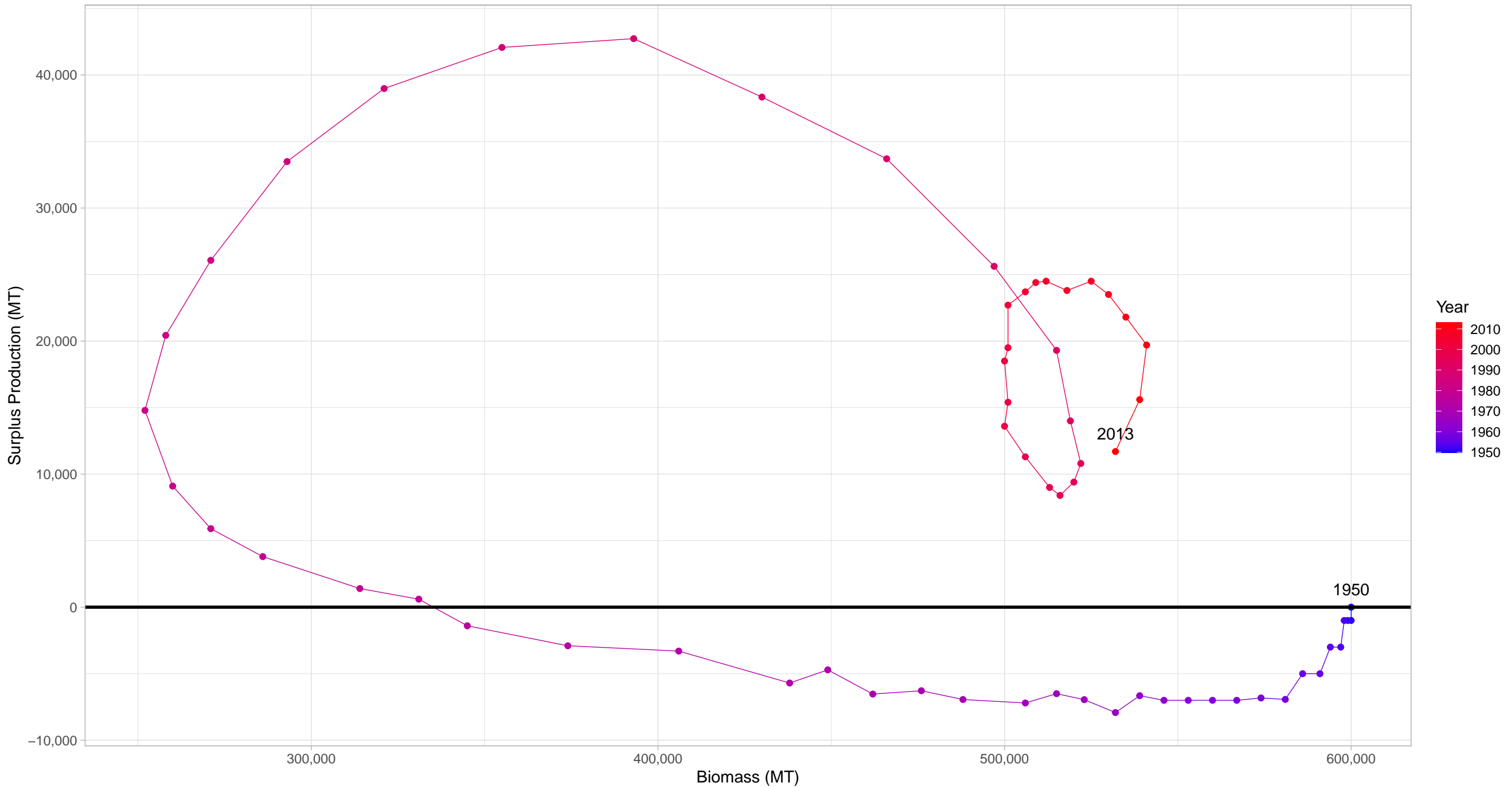
First and last years with recorded surplus production are labeled

Blue shark Indian Ocean in Elasmobranchs Taxonomy Group

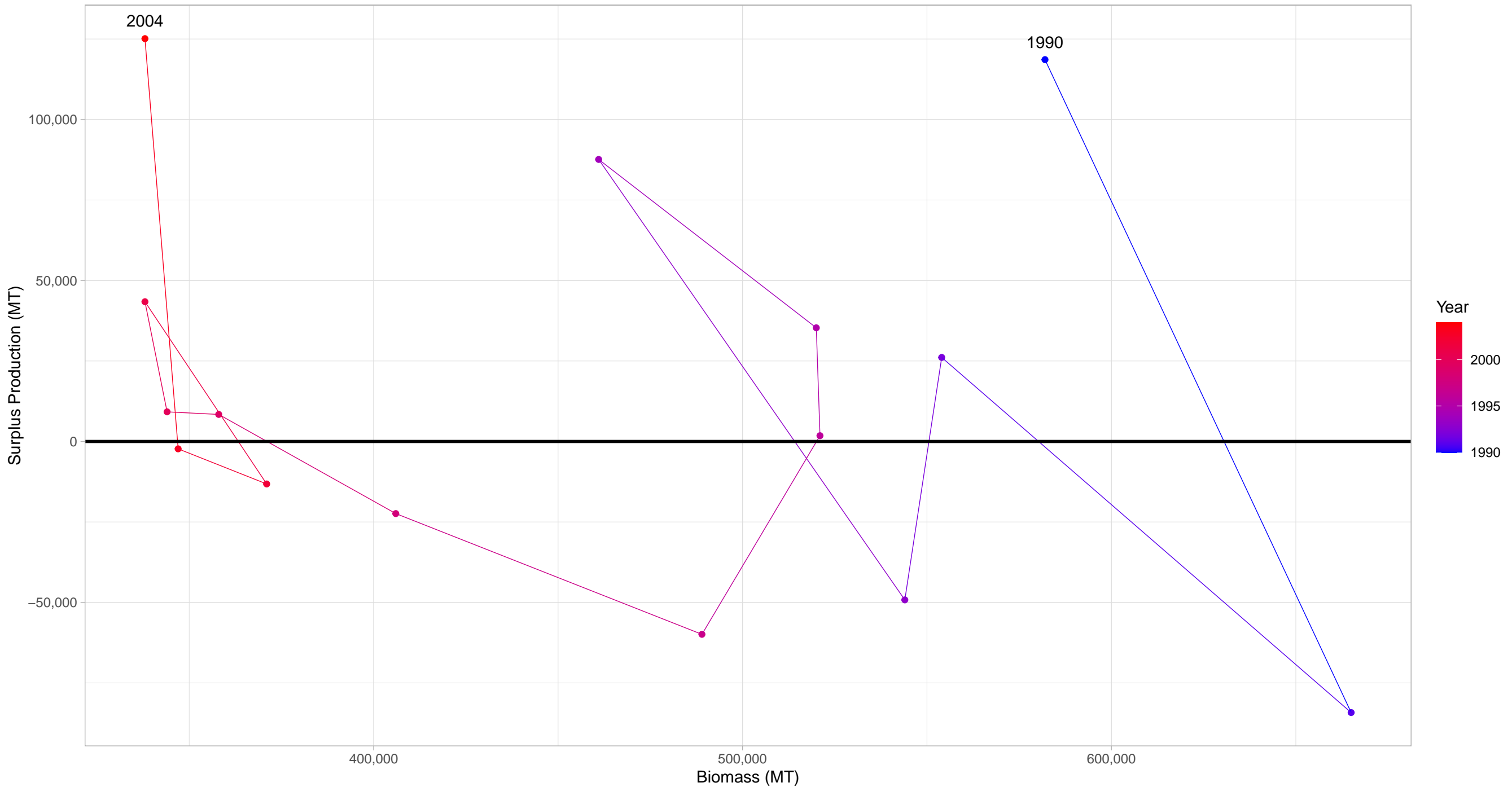


First and last years with recorded surplus production are labeled

Alaska skate Bering Sea and Aleutian Islands in Elasmobranchs Taxonomy Group



Spiny dogfish Atlantic Coast in Elasmobranchs Taxonomy Group



First and last years with recorded surplus production are labeled